

J.C.B. 1895  
(N 89° 37' 45" E)

(J.C.B. S 24° 32' 11" W 1/16)

W.H. Crandal  
E.W. Wade

F.T. Sanford  
72.07 a.

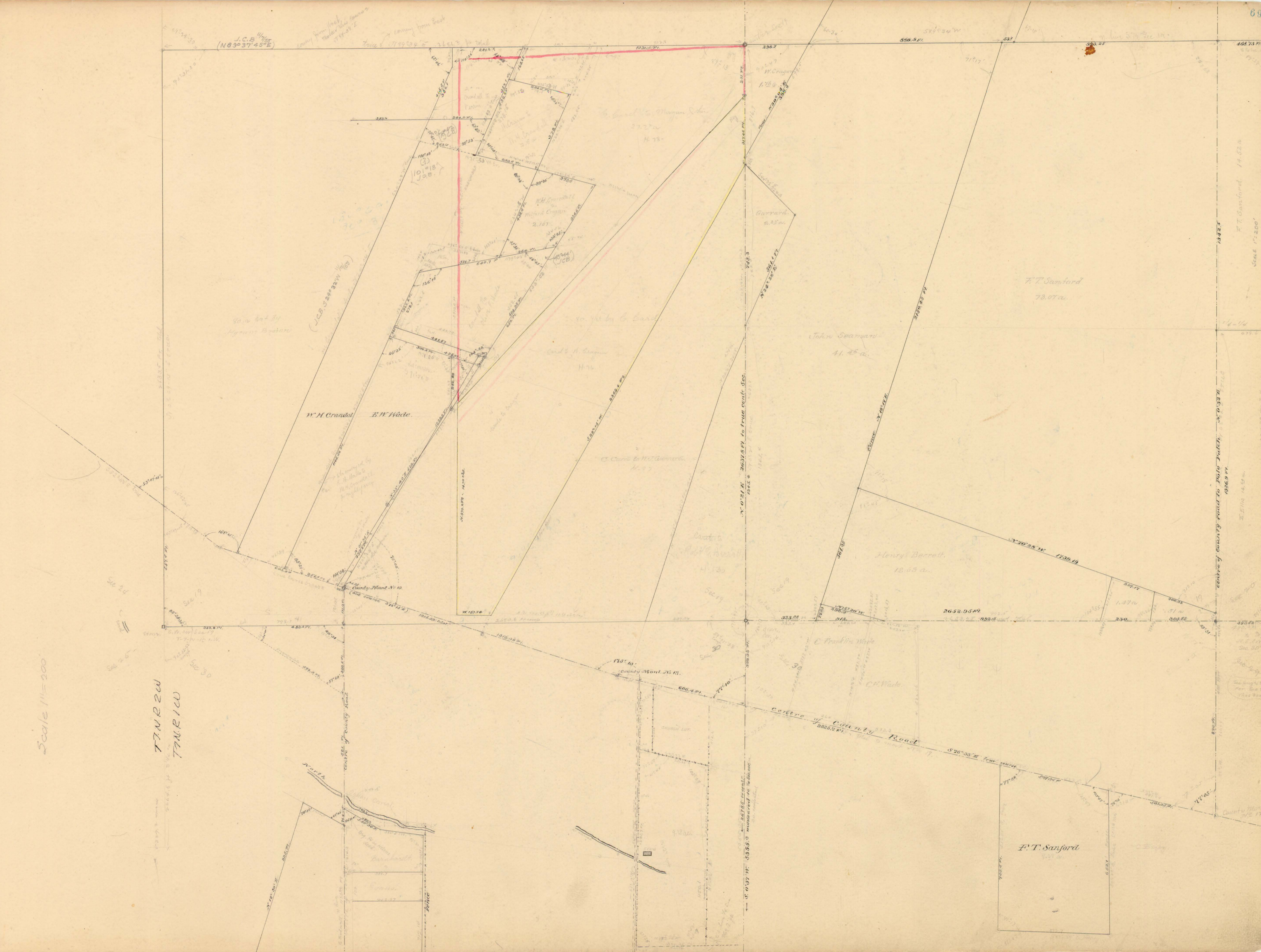
John Seaman  
41.25 a.

Henry Barrett  
18.63 a.

F.T. Sanford

Scale 1"=200

T7N R2W  
T7N R1W



Centre of County Road to Pole Point, N 93° 30' W, 2637.8 ft. to front corner, S 60° 10' W, 2637.8 ft.

Centre of County Road to Pole Point, N 93° 30' W, 2637.8 ft. to front corner, S 60° 10' W, 2637.8 ft.

F.T. Sanford, 14.52 a.  
Scale 1"=200'

Centre of County Road to Pole Point, N 93° 30' W, 2637.8 ft. to front corner, S 60° 10' W, 2637.8 ft.

Centre of County Road to Pole Point, N 93° 30' W, 2637.8 ft. to front corner, S 60° 10' W, 2637.8 ft.